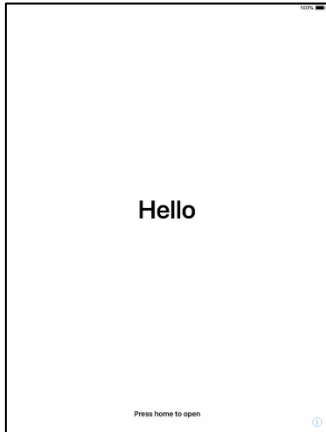


RKLT IT Services Guide

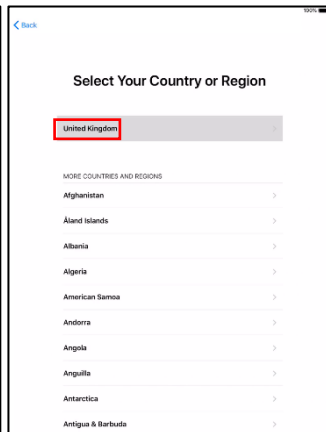
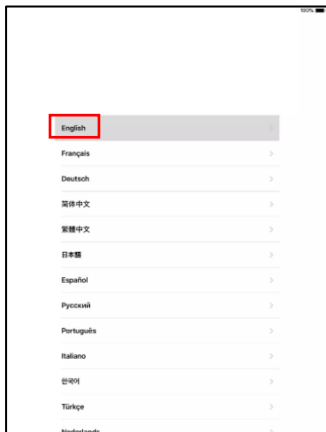
iPad Initial Setup Instructions – 2023 Managed Apple ID

1. Configuring Your New iPad



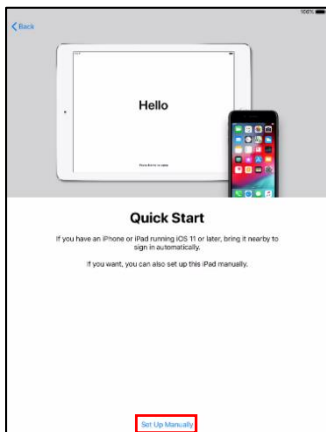
Unbox and power up your iPad

Press the home button on the iPad to begin



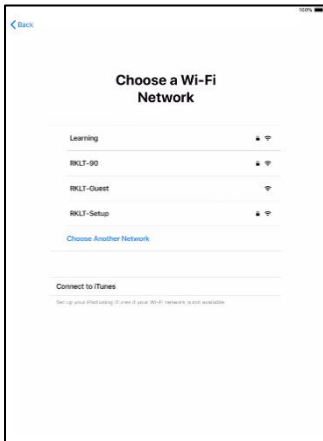
Select **“English”**

Select **“United Kingdom”**



Wait for the iPad to configure

Tap **“Set Up Manually”** at the bottom of the screen



Select your home Wi-Fi network

Enter your Wi-Fi password and tap **“Join”**

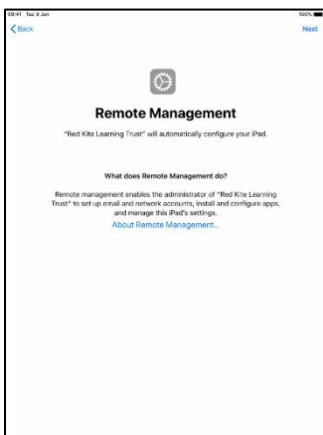
Once connected tap **“Next”** at the top right of the box



Select **“Don't Transfer Apps & Data”**.

DO NOT RESTORE A BACKUP from a personal device

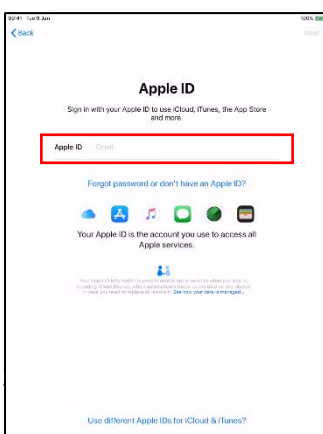
- Doing so will cause issues during the setup process



Once configured, tap **“Next”** at the top right of the screen

Wait for the Red Kite Learning Trust set up configuration to be installed

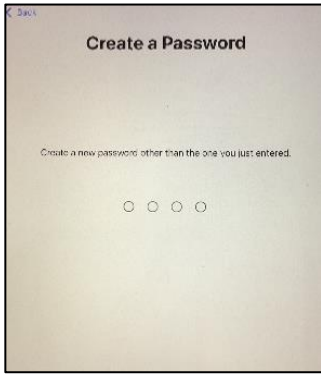
2. Personalisation



You will be given a **managed** Apple ID

The email address will be **the same as your school email** and you will be given a **temporary** Apple ID password

Enter your Apple ID email address into the **Apple ID** field



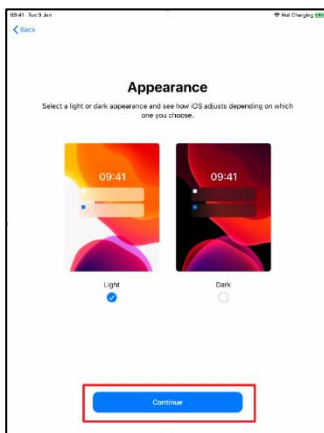
You will be prompted to **create a new password** for your Apple ID. This needs to be **different** to the password you have just entered

Enter the new password again

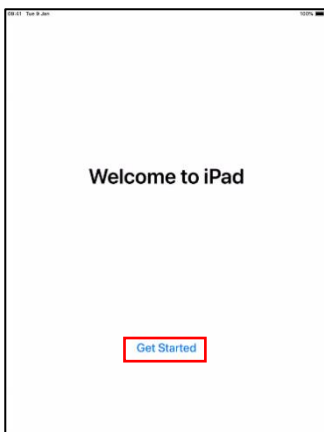
You **need** to remember this password as this will be your new Apple ID password



Enable **Location Services**

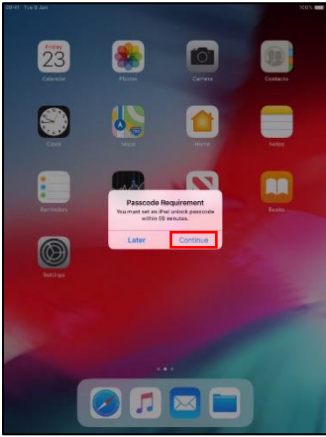


Select either Light or Dark mode and wait for the iPad to complete set up



If required, tap **Get Started**

You will be taken to the home screen of the iPad



The iPad will prompt you to create a passcode, press **“Change Now”**

Enter your four (or more) character passcode, and press **“Continue”**



Re-enter the passcode and press **“Set Passcode”**

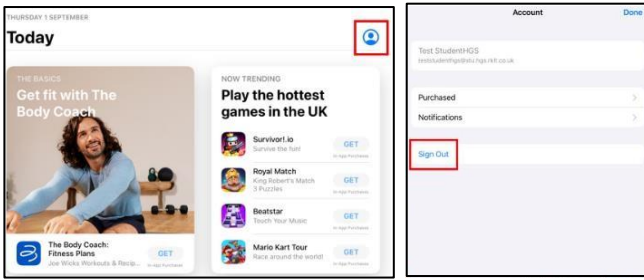
3. App Store Set Up & App Installation

A school-managed Apple ID provides you with extra iCloud storage and functionality for the Apple Classrooms but **cannot** install apps from the App store.

If you choose to install personal apps via the App Store you will need a personal Apple ID.



Go to the App Store

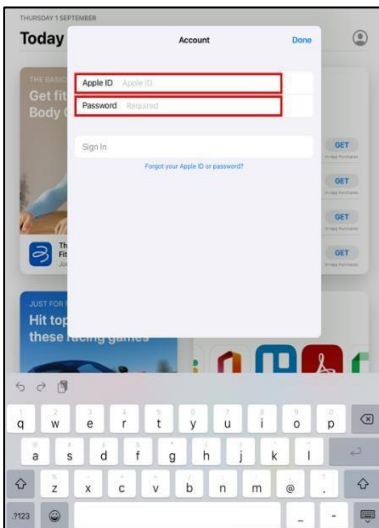


Select the user icon in the top right
Sign out of the managed Apple ID

Either use a personal Apple ID that you have already created or follow the official Apple guide to create an Apple ID - <https://appleid.apple.com/account>

Parents - If you need to create an Apple ID, please note Apple's policy is that users need to be 13+ to do so.

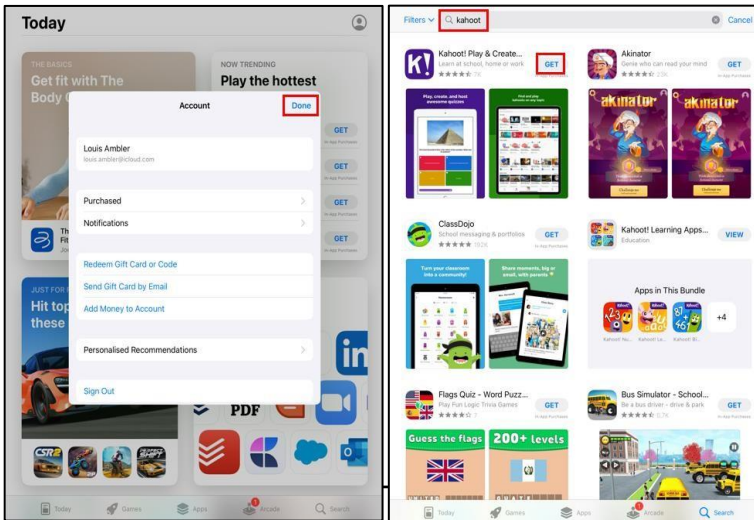
NOTE: YOU WILL NEED TO USE AN EXISTING EMAIL ADDRESS (not your school email) TO CREATE A NEW APPLE ID



Once your Apple ID is created select the user icon
Sign in using your new Apple ID credentials



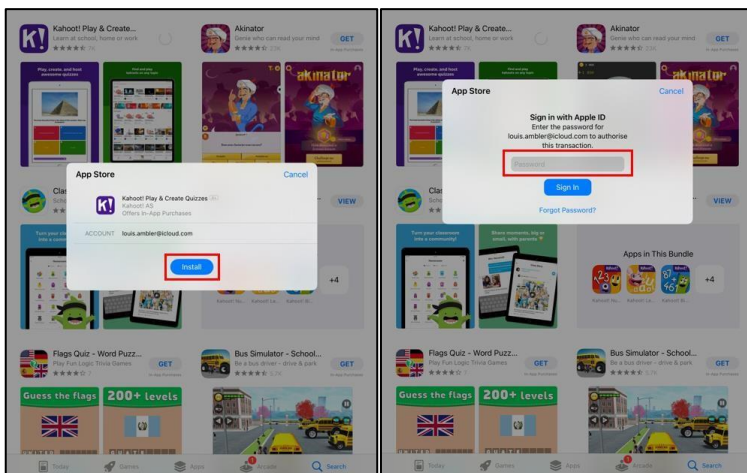
You may be asked for multi-factor authentication
Use another Apple device signed in with the same account or a phone number linked to the account to verify this



Select '**Done**'

You can now search for and download apps

The iPad is now fully setup.
If you have any issues or questions whilst setting up the iPad you can contact RKLIT Helpdesk by emailing helpdesk@rklit.co.uk



If you are prompted to 'Install', enter your **personal** Apple ID password

You will now be able to install apps