



Introduction to University

Elle Zientek

Student Recruitment Officer

Recruitment and Admissions

Where is Lancaster?



Approximate train journey times

North
Campus

Our campus

The campus occupies 578 acres of beautiful parkland

South
Campus



Health Innovation Campus



Sports Centre



South-West Campus

Today's Session

- What are the options?
- What experience do I want?
- How do I research and apply?



**What are the
options?**



League tables

- League tables are independent tables mainly produced by newspapers.
- They provide prospective university students with data to decide which university is the ‘best fit’ for them.
- Remember to use league tables subjectively – there’s no perfect way to measure if one university is better than another.



University Challenge!

Can you rank, in descending order the following universities?

As listed in The Complete University Guide 2026

University	Ranking
Exeter	11 th
Bath	8 th
UCL	13 th
Lancaster	10 th
Manchester	28 th
Newcastle	31 st
Cambridge	1 st
Edinburgh	18 th

Triple Top 15 *in the UK*

10TH

The number 10 is rendered in a large, blue, sans-serif font. To the left of the '0' is a red building icon with a grey base. Above the '0' are two white clouds. A small blue circle containing the letters 'TH' is positioned to the right of the '0'.

Complete University
Guide 2026

14TH

The number 14 is rendered in a large, blue, sans-serif font. A white cloud icon is positioned above the '4'. A small blue circle containing the letters 'TH' is positioned to the right of the '4'.

The Guardian
University Guide 2026

15TH

The number 15 is rendered in a large, blue, sans-serif font. A duck icon is integrated into the '5'. A small blue circle containing the letters 'TH' is positioned to the right of the '5'.

The Times and Sunday Times
Good University Guide 2026

Course Rankings

2nd

Dance, Drama &
Cinematics

2nd

Linguistics

4th

Italian

6th

Biomedical
Sciences

6th

Creative
Writing

8th

Accounting &
Finance

8th

Architecture

9th

Physics &
Astronomy

Do you know the Russell Group?

Which of the following Universities are **not** in the **Russell Group**?

Birmingham

Liverpool

Bath

Lancaster

Bristol

Royal Holloway

Coventry

Oxford

Durham

Queen Mary

Exeter

Southampton

Glasgow

St Andrew's

Goldsmith's

Sussex

Imperial

Warwick

Leicester

York

Do you know the Russell Group?

Which of the following Universities are **not** in the **Russell Group**?

Birmingham

Bath

Bristol

Coventry

Durham

Exeter

Glasgow

Goldsmith's

Imperial

Leicester

Liverpool

Lancaster

Royal Holloway

Oxford

Queen Mary

Southampton

St Andrew's

Sussex

Warwick

York

Research Intensive University

- Traditional subject courses
- National and international reputation
- Highly competitive
- High entry requirements
- Campus or City based



Vocational University

- Specialist courses
- Great employer links
- More accessible
- Campus or City based



What size of university?

- Big
- 20 to 40,000 students
- Manchester, Bristol, Newcastle, Leeds,...
- Small
- 10 to 20,000 students
- Lancaster, York, Durham, Oxford, Warwick...

Campus

- Self contained in one location and student orientated
- Community, safety and security
- Accommodation in proximity to university facilities
- Examples include Lancaster, Loughborough and Exeter

City

- Closer to more amenities and services
- Useful for fostering work/life balance
- Some people prefer the buzz of a big city
- Examples include Manchester, Birmingham, Oxford



**What
experience do I
want?**



Home or Away?

- Some people thrive living away, and others prefer having friends and family nearby.
- Location affects living costs and opportunities available to you.
- Remember: there is no right or wrong way to 'do' university - only your way!



Accommodation

- Private rental or university halls?
- En-suite or shared facilities?
- What's the price range?
- Where's the accommodation located?
- Is accommodation guaranteed?





PLAY
YOUR CARDS
RIGHT



Play your accommodation cards right!

University		Cost Per Week 2025-26*	Overall Contract 2025-26*
Lancaster		£196	£7,840 (40 weeks)
Leeds	↑	£204	£8,784 (43 weeks)
Cambridge	↑	£228	£6,840 (30 weeks)
St Andrews	↔	£200 / £233	£7,625 / £8,849 (38 weeks)
Bath	↑	£280	£10,640 (38 weeks)
Liverpool	↓	£204	£7,956 (39 weeks)
Swansea	↓	£144	£6,336 (44 weeks)
UCL	£	£387	£15,093 (39 weeks)

**Based on a Premium En-suite Room or equivalent
Data from individual university websites in July 2025.*

Types of Courses

Traditional Courses

- English, Maths, Sciences, Art

Not Available at School/College

- Medicine, Accounting, Zoology

Combined Courses

- Psychology and Criminology

Specified Subjects

- Ethical Hacking, Baking Science and Technology



Study Abroad

- Study for a year at a different university in another country
- Look for Study Abroad in your course title
- Other travel opportunities may be available (terms abroad, summer schools, field trips)



Industry Placements

- Take an extra year and work in a job designed to develop university students and their skills.
- Many placements are paid and you pay only 20% of that year's tuition.
- Check for support from your university when applying - both practical and financial.
- Look for placement degrees on UCAS.



Entry Requirements

- Some universities admit students based on total UCAS tariff points.
- Others (like Lancaster) consider your best grades instead.
- Some courses require an interview.
- You may need particular qualifications or subjects.
- Not all universities consider resits.



Modules

Comparison of optional third year modules for BA (Hons) Geography

Lancaster University

- Alpine Environmental Processes Field Course
- Coral Reef Ecology
- Environment, Politics and Society in Amazonia
- Food and Agriculture in the 21st Century
- Glacial Systems
- The Causes and Consequences of Environmental Radioactivity
- Water, Society and the Istrian Landscape

University of Sheffield

- Environmental Justice at a Time of Crisis
- Decolonising Geographies
- The Changing Climate System
- Creative Geographies: Media, Imaginaries and Politics
- Future Cities
- Urban Exploration
- Democracy and Citizenship: Dilemmas and Tensions

Facilities

Academic

- Science labs, computer equipment or performance spaces

Extra-curricular

- Sports facilities, theatre, cinema, swimming pool, etc.

Health-based

- Pharmacy, GP surgery, dentist

Remember: when you choose a university, you choose a home. Think about the facilities that'll make a difference to you!



Sports

- 25 metre swimming pool
- Sports halls
- Studios
- Fitness suite
- Strength and conditioning room
- Climbing wall and bouldering cave
- Tennis courts
- Sports pitches
- 2.6-mile woodland walk
- Trim trail
- Netball courts
- Lacrosse pitch
- Multi-use games areas
- Synthetic grass pitches
- Rugby pitches
- Association football pitches
- Crown bowling green
- Student representation
- Artificial cricket wicket
- 3G pitch
- Advice



How do I apply?



The UCAS Hub

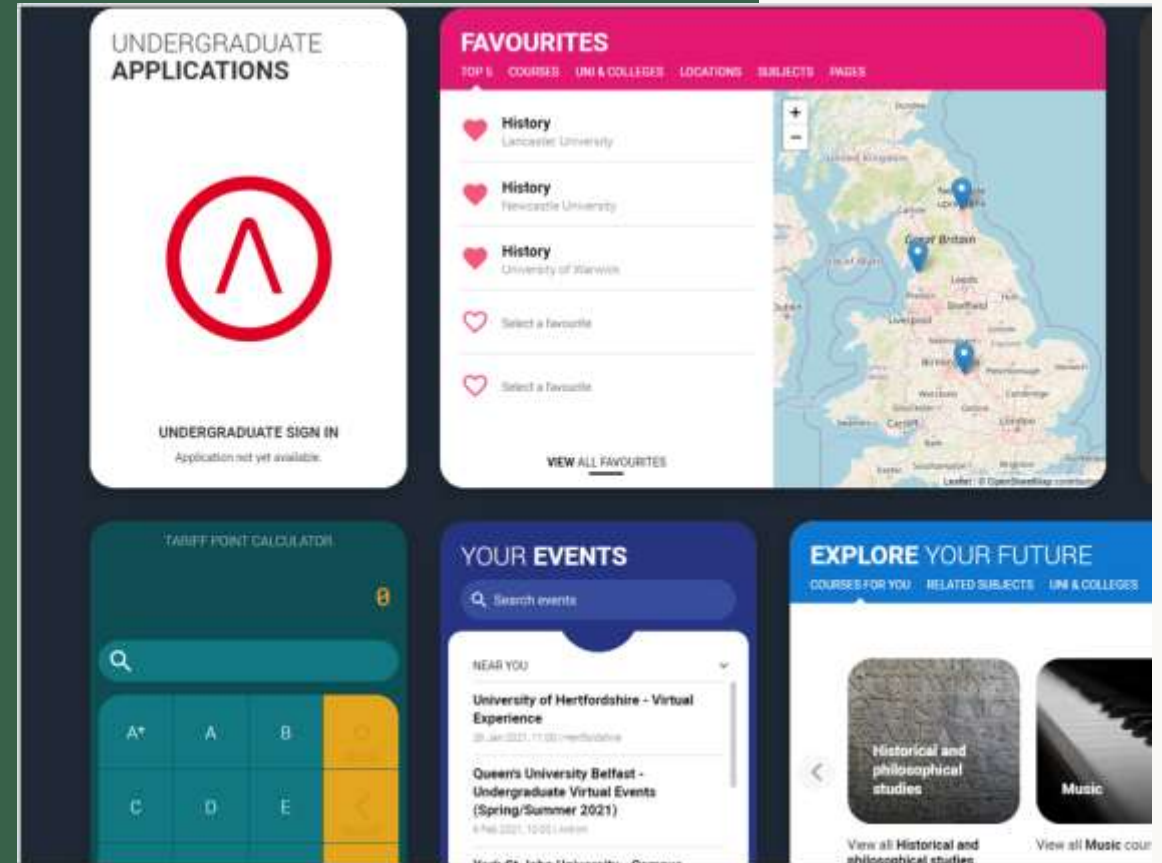
www.ucas.com

- Customisable
- Detailed breakdown of your choices

Most of you will get 5 choices.

You will receive back Offers, Rejects or other responses.

You will choose which to put as Firm, Conditional and Decline the rest.



The UCAS Application

Personal Details

Chosen Courses

Education and Grades

Employment

Personal Statement

Reference

Research and Priorities

What do you want out of
university?

A top-
ranked
course

A large
city

Staying
close to
home

Pursuing
a
specialist
course

Joining
particular
societies

Study
abroad

Enhancing
your
employability

Living in a
new place

Discover a Top 10 UK University at a Lancaster Open Day 2026

Summer

Sat 27th June

Sat 11th July

Autumn

Sat 12th September

Sat 17th October

Thank you

Any Questions?